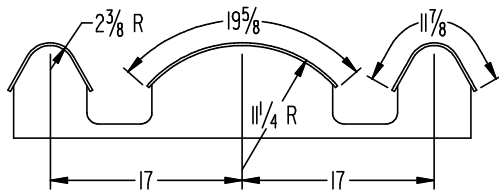
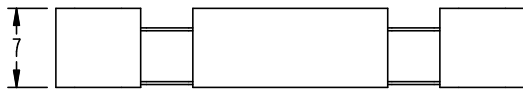


BUCK DIMENSIONS



SUPPLY REQUIREMENTS

- 1) WEIGHT OF PRESS: 700 LBS.
- 2) AIR SUPPLY : 85 PSI
- 3) STEAM SUPPLY : 100-125 PSI MIN.
- 4) ELECTRICAL : 120/230V, 1-PH., 50-60 Hz, 1/2 AMP

CONSUMPTION

- 1) AIR : 1 CU. FT. FREE AIR/CYCLE
- 2) STEAM : 1/2 BOILER H.P.

NOTE:
COMPUTER GENERATED.
NO CHANGES TO THIS
TRACING PERMISSIBLE

+	+	+	+	+
ITEM	PART NO.	QTY.	DESCRIPTION	MATERIAL
<p>THIS DOCUMENT CONTAINS PROPRIETARY DATA OF UNIPRESS CORP. NO DISCLOSURE, REPRODUCTION OR USE OF ANY PART THEREOF MAY BE MADE EXCEPT BY WRITTEN PERMISSION.</p>				
			<h1>UNIPRESS</h1> <p>TAMPA, FLORIDA</p>	
×	×		<p>DATE</p> <p>TOLERANCES UNLESS OTHERWISE SPECIFIED</p> <p>DRAWN</p> <p>V.I.C.</p> <p>3-7-94</p>	<p>NAME</p> <p>ROUGHING IN PLAN F3T</p>
+	+		<p>ECO</p> <p>CASTINGS ± 1/16</p> <p>FABRICATIONS ± 1/64</p> <p>MACHINING ± .05</p> <p>2 PL. DECIMAL ± .005</p> <p>3 PL. DECIMAL ± .004</p> <p>SURFACES ± .004</p> <p>BORES ± .004</p> <p>BREAK CORNERS ± .020</p> <p>ANGLES ± 1/2°</p> <p>CHECKED</p> <p>MH</p> <p>3-9-94</p> <p>SCALE</p> <p>1/8" = 1"</p>	
+	+		<p>REV</p>	<p>NUMBER</p> <p>29823-DC</p>
+	+			<p>REV</p> <p>+</p>